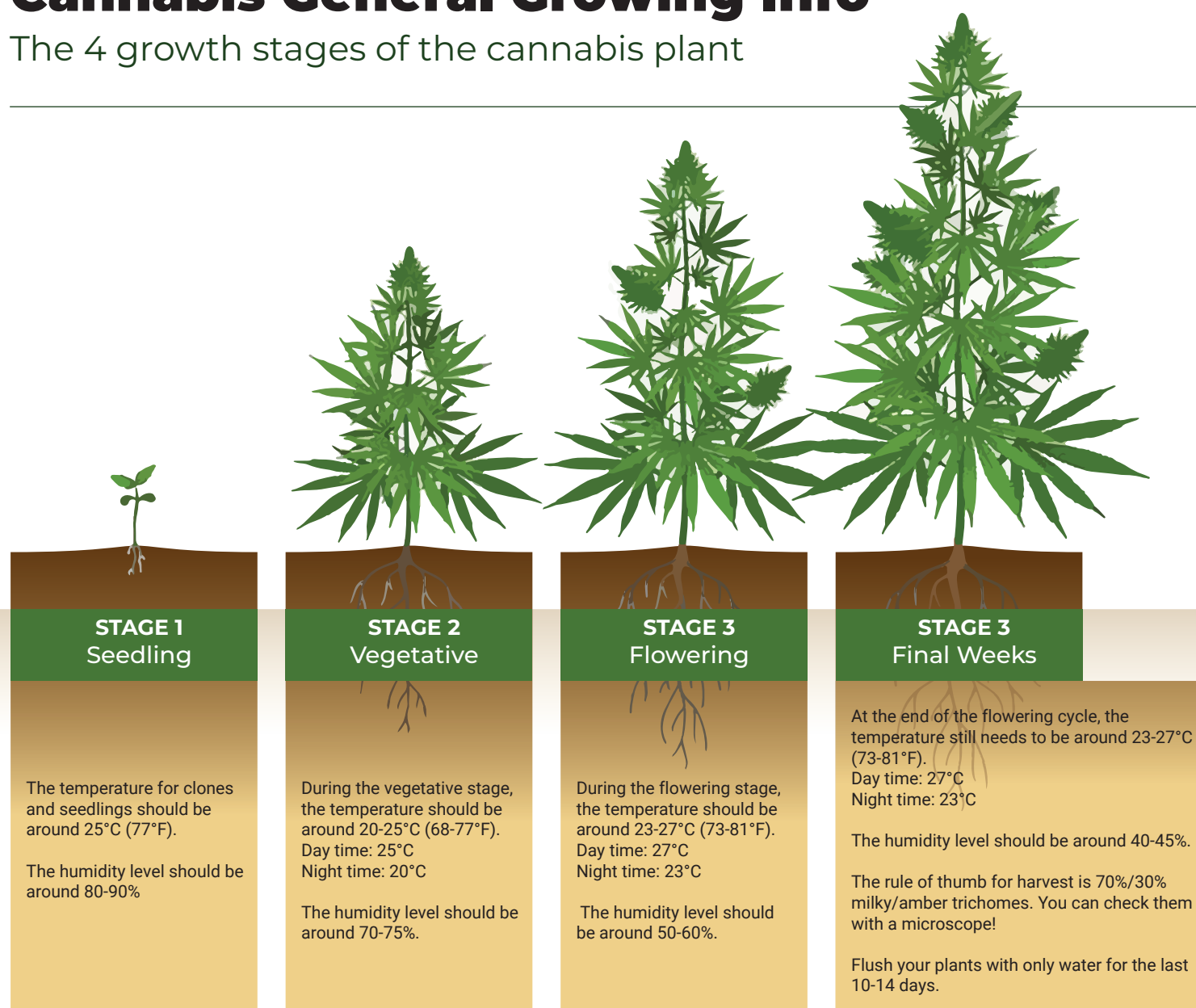


# Cannabis General Growing Info

The 4 growth stages of the cannabis plant



## AT ALL STAGES YOUR PLANTS SHOULD

- Have a good ventilation and airflow,
- A minimum 400 watt HPS Lights per m<sup>2</sup> or 300W LED,
- A PH level of 5.6 - 6,
- A 'Goldilocks' medium, not too wet/not too dry!
- Be checked for pests, diseases and deficiencies.
- Check out our infographic about issues from fertilizer deficiency or excess.

